

FULL MARINA SKYLINE VIEW

# ADDRESS THE BAY

EMAAR BEACHFRONT

**2BR APARTMENT**  
**BUA 1,345 SQFT**







## SKYLINE VIEWS

51<sup>th</sup> floor

Presenting an exclusive opportunity to acquire a remarkable 2-bedroom apartment located on the topmost floor, featuring awe-inspiring panoramic views of the entire marina skyline. This exceptional dwelling stands as a testament to exquisite design, characterized by a seamless transition from the open-concept living space to the dining area. Floor-to-ceiling windows grace the residence, framing the breathtaking vistas and flooding the apartment with an abundance of natural light.



1.5 KM of  
Pristine Beach



Panoramic Views  
of the Sea & Marina



Steps Away from  
Marina & Yacht Club



Direct Access to  
Sheikh Zayed Road



2 Neighbourhood  
Parks



Nearby Licensed  
Restaurants

FLOORPLAN



ADDRESS  
RESIDENCES  
THE BAY

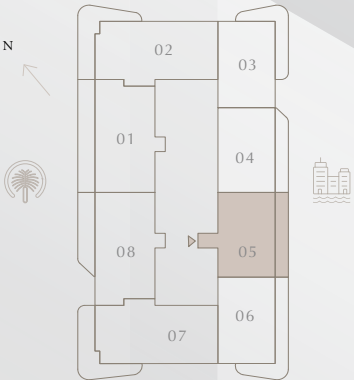
2 BEDROOM TYPE C 1

LEVEL 36-54 | UNIT 05

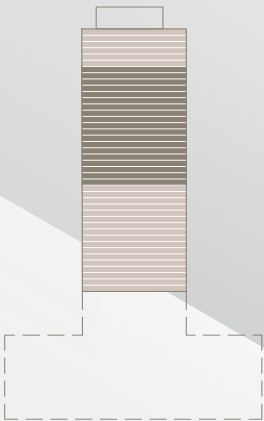
SUITE AREA	1127.41 SQ.FT.	104.74 SQ.M.
BALCONY AREA	217.43 SQ.FT.	20.20 SQ.M.
TOTAL AREA	1344.84 SQ.FT.	124.94 SQ.M.



KEY PLAN LEVEL  
36-54



KEY SECTION





**IN THE  
HEART  
OF A  
VIBRANT  
LOCATION**

