

FLOOR PLAN

# Pier Point

RASHID YACHTS & MARINA

# Pier Point 1

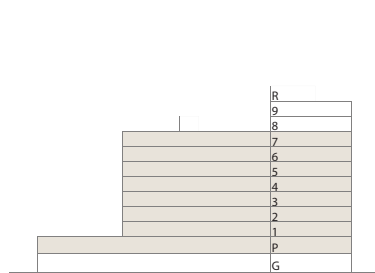
RASHID YACHTS & MARINA

## 1 BEDROOM

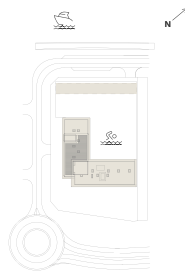
TYPE A.1  
UNITS P07, 110, 210-710

SUITE AREA	736.47 SQ.FT	68.42 SQ.M
BALCONY AREA	73.95 SQ.FT	6.87 SQ.M
TOTAL AREA	810.41 SQ.FT	75.29 SQ.M

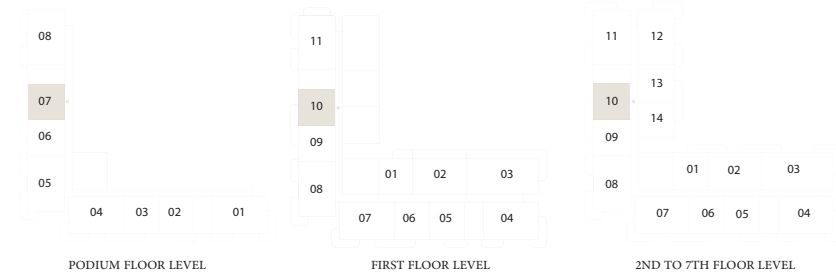
### KEY SECTION



### LAYOUT



### KEY PLAN



# Pier Point 1

RASHID YACHTS & MARINA

## 2 BEDROOM

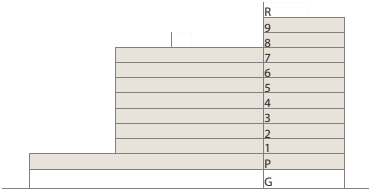
TYPE A.1  
UNITS P01, 104, 204-704, 804-904

SUITE AREA 1090.71-1091.46 SQ.FT 101.33-101.40 SQ.M

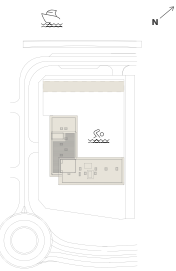
BALCONY AREA 201.18-201.5 SQ.FT 18.69-18.72 SQ.M

TOTAL AREA 1292.21-1292.64 SQ.FT 120.05 -120.09 SQ.M

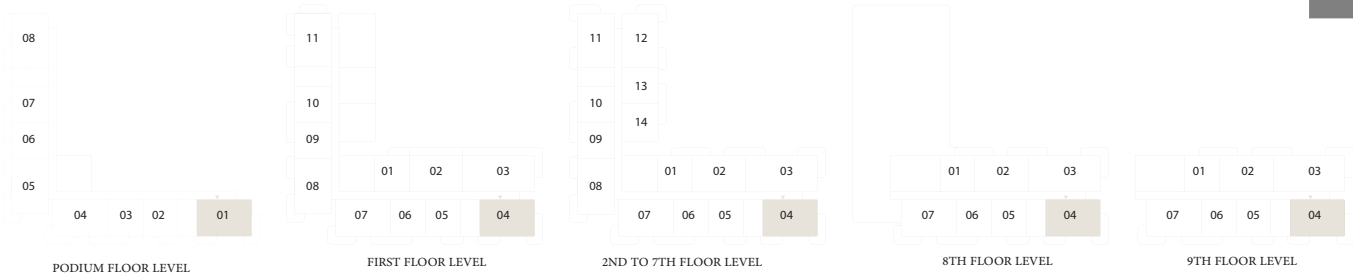
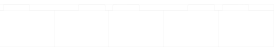
### KEY SECTION



### LAYOUT



### KEY PLAN



FLOOR PLAN 1. All dimensions are in imperial and metric, and measured from finish to finish excluding construction tolerances. 2. All materials, dimensions, and drawings are approximate only. 3. Information is subject to change without notice, at developer's absolute discretion. 4. Actual area may vary from the stated area. 5. Drawings not to scale. 6. All images used are for illustrative purposes only and do not represent the actual size, features, specifications, fittings, and furnishings. 7. The developer reserves the right to make revisions / alterations, at it's absolute discretion, without any liability whatsoever.

# Pier Point 1

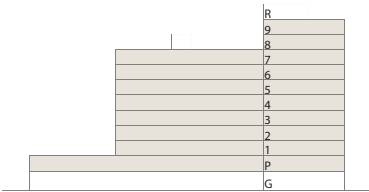
RASHID YACHTS & MARINA

## 2 BEDROOM

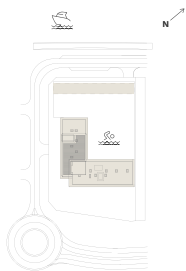
TYPE A.2  
UNITS P04, 107, 207-707, 807-907

SUITE AREA	1085.54-1086.29 SQ.FT	100.85-100.92 SQ.M
BALCONY AREA	198.70-199.24 SQ.FT	18.46-18.51 SQ.M
TOTAL AREA	1284.78-1285 SQ.FT	119.36-119.38 SQ.M

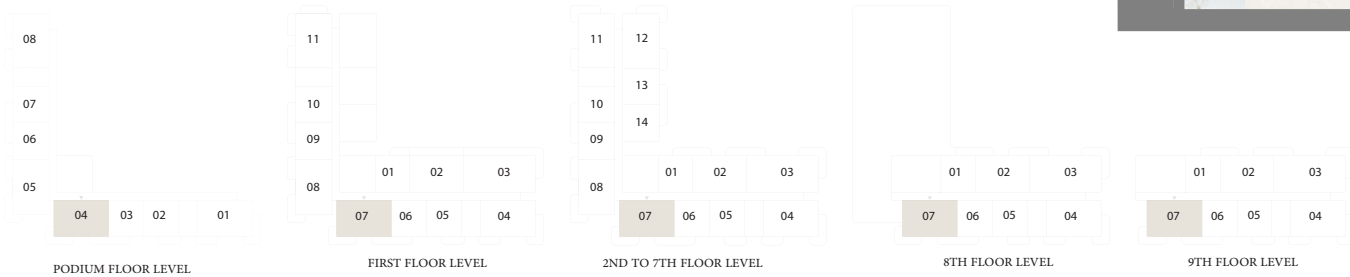
### KEY SECTION



### LAYOUT



### KEY PLAN



FLOOR PLAN 1. All dimensions are in imperial and metric, and measured from finish to finish excluding construction tolerances. 2. All materials, dimensions, and drawings are approximate only. 3. Information is subject to change without notice, at developer's absolute discretion. 4. Actual area may vary from the stated area. 5. Drawings not to scale. 6. All images used are for illustrative purposes only and do not represent the actual size, features, specifications, fittings, and furnishings. 7. The developer reserves the right to make revisions / alterations, at it's absolute discretion, without any liability whatsoever.



# Pier Point 1

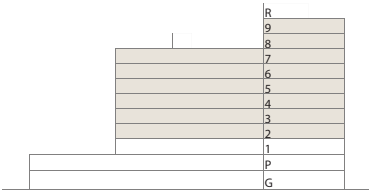
RASHID YACHTS & MARINA

## 2 BEDROOM

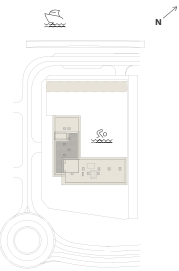
TYPE B.1  
UNITS 202-702, 802-902

SUITE AREA	1074.78-1076.07 SQ.FT	99.85-99.97 SQ.M
BALCONY AREA	137.46-140.36 SQ.FT	12.77-13.04 SQ.M
TOTAL AREA	1212.55-1215.14 SQ.FT	112.65-112.89 SQ.M

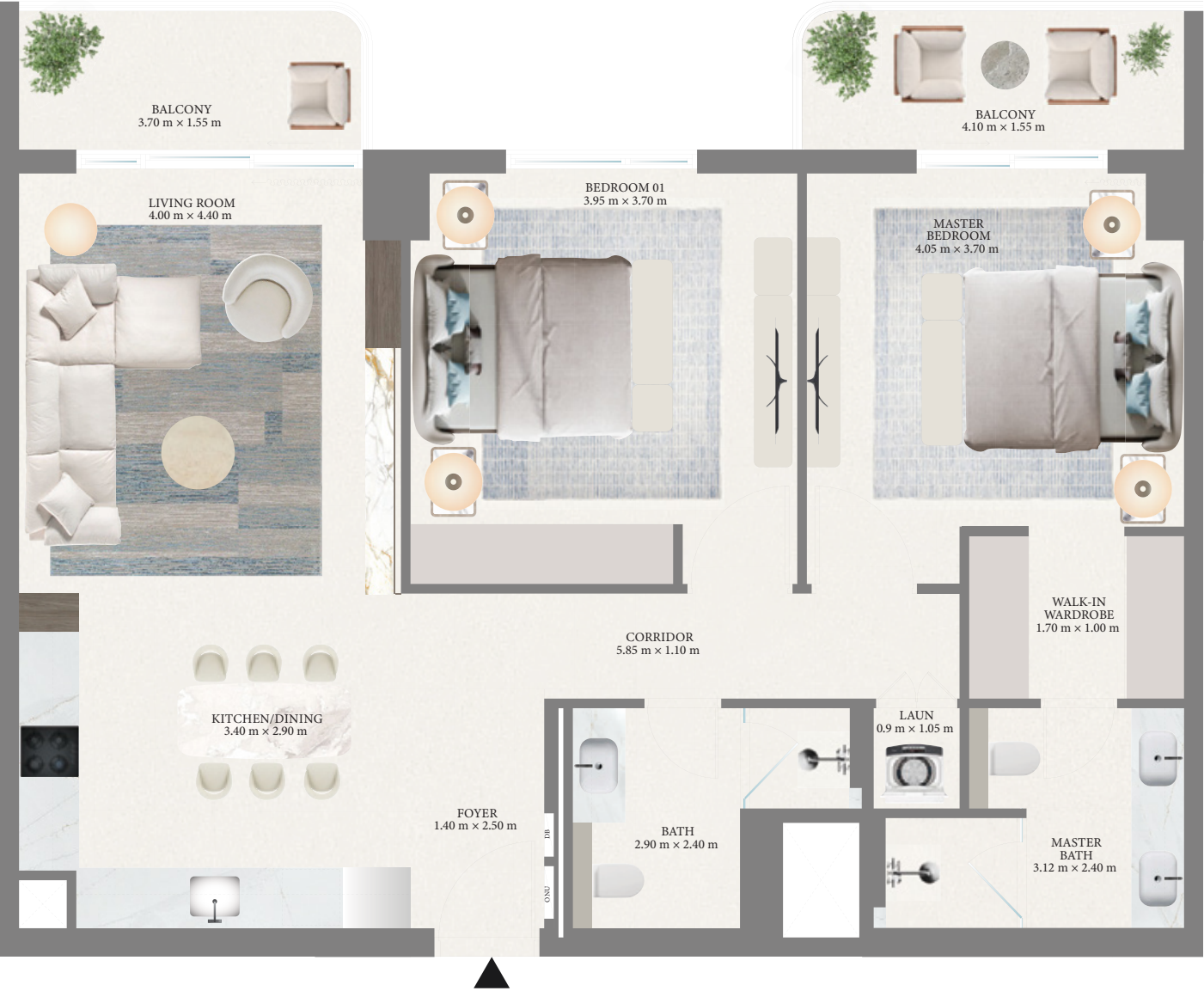
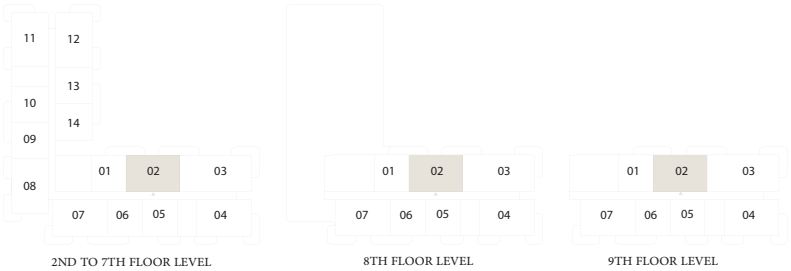
### KEY SECTION



### LAYOUT



### KEY PLAN



# Pier Point 1

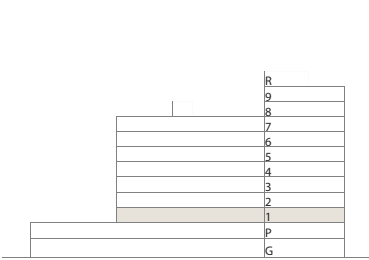
RASHID YACHTS & MARINA

## 2 BEDROOM

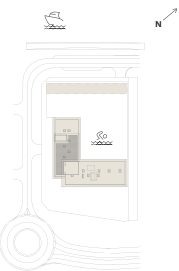
TYPE B.2  
UNIT 102

SUITE AREA	1076.07 SQ.FT	99.97 SQ.M
BALCONY AREA	276.96 SQ.FT	25.73 SQ.M
TOTAL AREA	1353.02 SQ.FT	125.7 SQ.M

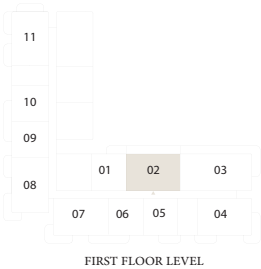
KEY SECTION



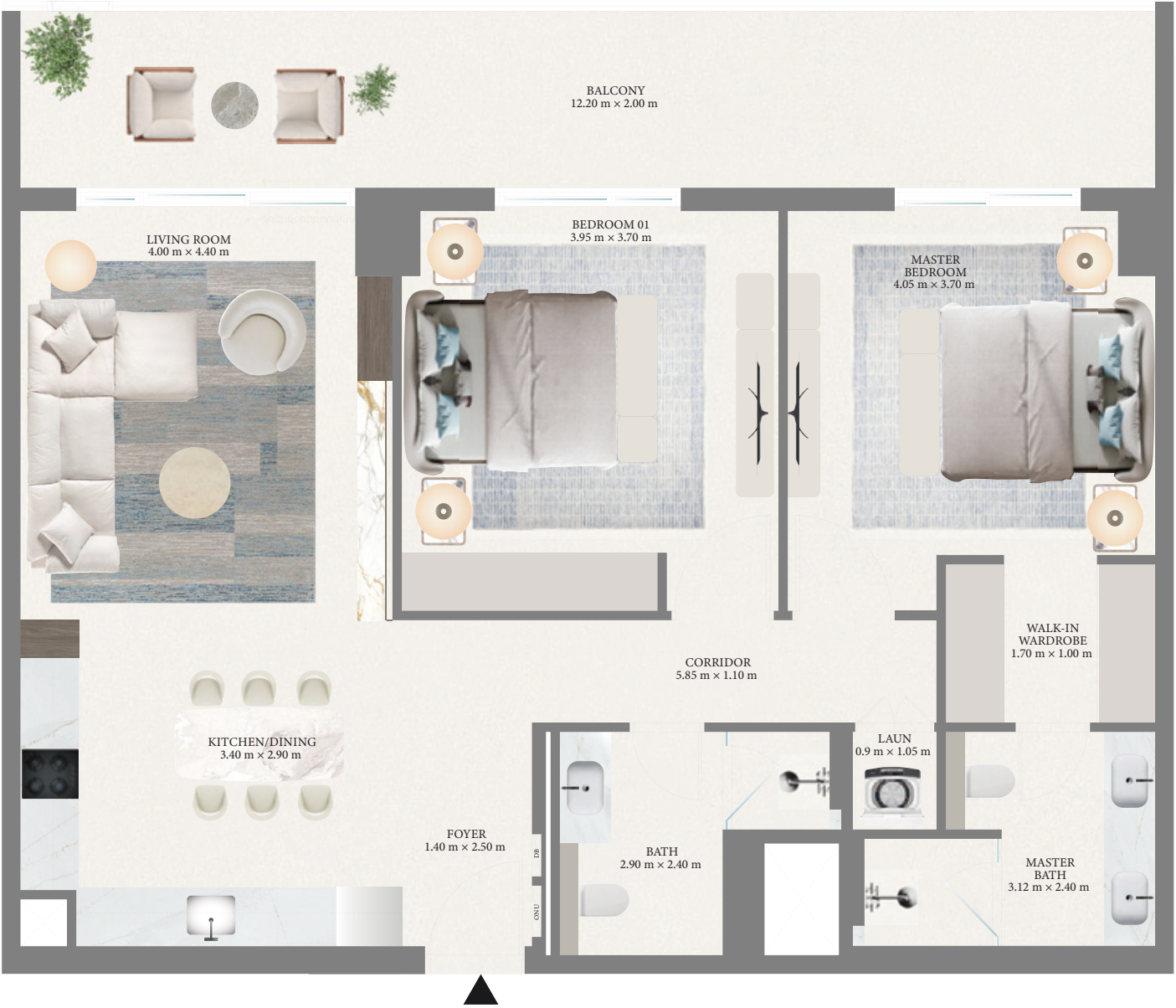
LAYOUT



KEY PLAN



FIRST FLOOR LEVEL



FLOOR PLAN 1. All dimensions are in imperial and metric, and measured from finish to finish excluding construction tolerances. 2. All materials, dimensions, and drawings are approximate only. 3. Information is subject to change without notice, at developer's absolute discretion. 4. Actual area may vary from the stated area. 5. Drawings not to scale. 6. All images used are for illustrative purposes only and do not represent the actual size, features, specifications, fittings, and furnishings. 7. The developer reserves the right to make revisions / alterations, at it's absolute discretion, without any liability whatsoever.



# Pier Point 1

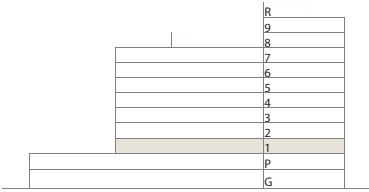
RASHID YACHTS & MARINA

## 2 BEDROOM

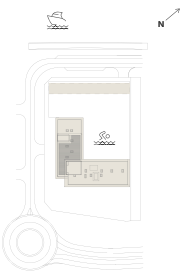
TYPE C.3  
UNIT 111

SUITE AREA	1086.19 SQ.FT	100.91 SQ.M
BALCONY AREA	286.75 SQ.FT	26.64 SQ.M
TOTAL AREA	1372.94 SQ.FT	127.55 SQ.M

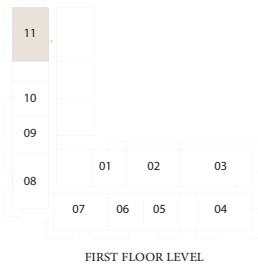
### KEY SECTION



### LAYOUT



### KEY PLAN



FIRST FLOOR LEVEL



FLOOR PLAN 1. All dimensions are in imperial and metric, and measured from finish to finish excluding construction tolerances. 2. All materials, dimensions, and drawings are approximate only. 3. Information is subject to change without notice, at developer's absolute discretion. 4. Actual area may vary from the stated area. 5. Drawings not to scale. 6. All images used are for illustrative purposes only and do not represent the actual size, features, specifications, fittings, and furnishings. 7. The developer reserves the right to make revisions / alterations, at it's absolute discretion, without any liability whatsoever.

# Pier Point 1

RASHID YACHTS & MARINA

## 3 BEDROOM

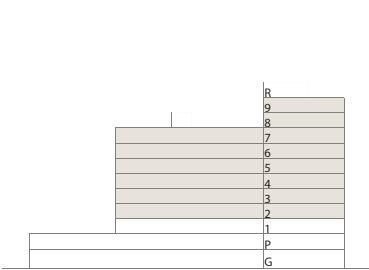
TYPE A.1  
UNITS 203-703, 803-903

SUITE AREA 1422.99-1423.53 SQ.FT 132.20-132.25 SQ.M

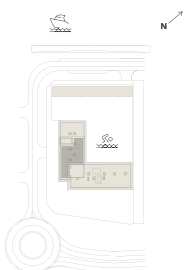
BALCONY AREA 245.85-248.54 SQ.FT 22.84-23.09 SQ.M

TOTAL AREA 1668.84-1671.74 SQ.FT 155.04-155.31 SQ.M

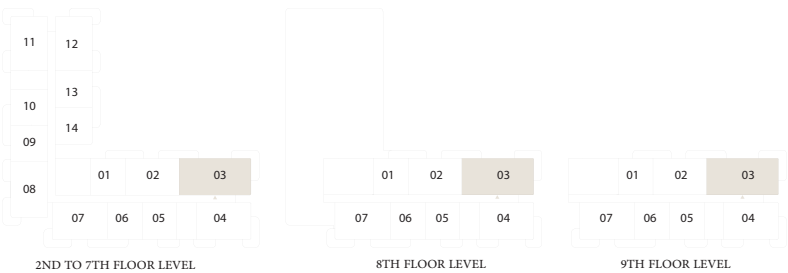
KEY SECTION



LAYOUT



KEY PLAN



FLOOR PLAN 1. All dimensions are in imperial and metric, and measured from finish to finish excluding construction tolerances. 2. All materials, dimensions, and drawings are approximate only. 3. Information is subject to change without notice, at developer's absolute discretion. 4. Actual area may vary from the stated area. 5. Drawings not to scale. 6. All images used are for illustrative purposes only and do not represent the actual size, features, specifications, fittings, and furnishings. 7. The developer reserves the right to make revisions / alterations, at it's absolute discretion, without any liability whatsoever.



# Pier Point 1

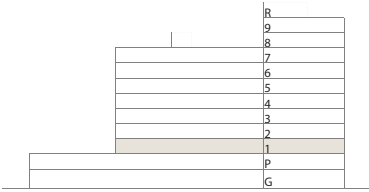
RASHID YACHTS & MARINA

## 3 BEDROOM

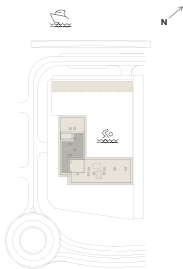
TYPE A.2  
UNIT 103

SUITE AREA	1423.53 SQ.FT	132.25 SQ.M
BALCONY AREA	483.51 SQ.FT	44.92 SQ.M
TOTAL AREA	1907.04 SQ.FT	177.17 SQ.M

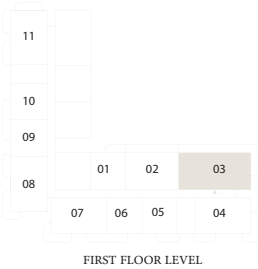
KEY SECTION



LAYOUT



KEY PLAN



FLOOR PLAN 1. All dimensions are in imperial and metric, and measured from finish to finish excluding construction tolerances. 2. All materials, dimensions, and drawings are approximate only. 3. Information is subject to change without notice, at developer's absolute discretion. 4. Actual area may vary from the stated area. 5. Drawings not to scale. 6. All images used are for illustrative purposes only and do not represent the actual size, features, specifications, fittings, and furnishings. 7. The developer reserves the right to make revisions / alterations, at it's absolute discretion, without any liability whatsoever.

# Pier Point 1

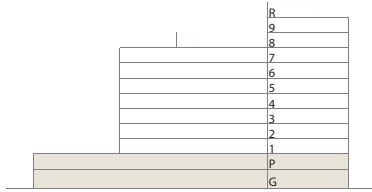
RASHID YACHTS & MARINA

## TOWNHOUSE

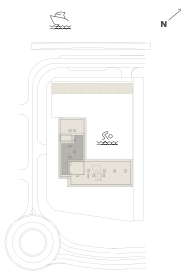
TYPE A.1  
UNITS TH02 & TH04

SUITE AREA	2199.82 SQ.FT	204.37 SQ.M
BALCONY AREA	467.37 SQ.FT	43.42 SQ.M
TOTAL AREA	2667.19 SQ.FT	247.79 SQ.M

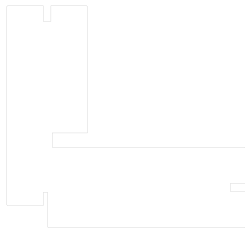
### KEY SECTION



### LAYOUT



### KEY PLAN



GROUND FLOOR LEVEL



UPPER LEVEL



LOWER LEVEL

FLOOR PLAN 1. All dimensions are in imperial and metric, and measured from finish to finish excluding construction tolerances. 2. All materials, dimensions, and drawings are approximate only. 3. Information is subject to change without notice, at developer's absolute discretion. 4. Actual area may vary from the stated area. 5. Drawings not to scale. 6. All images used are for illustrative purposes only and do not represent the actual size, features, specifications, fittings, and furnishings. 7. The developer reserves the right to make revisions / alterations, at it's absolute discretion, without any liability whatsoever.